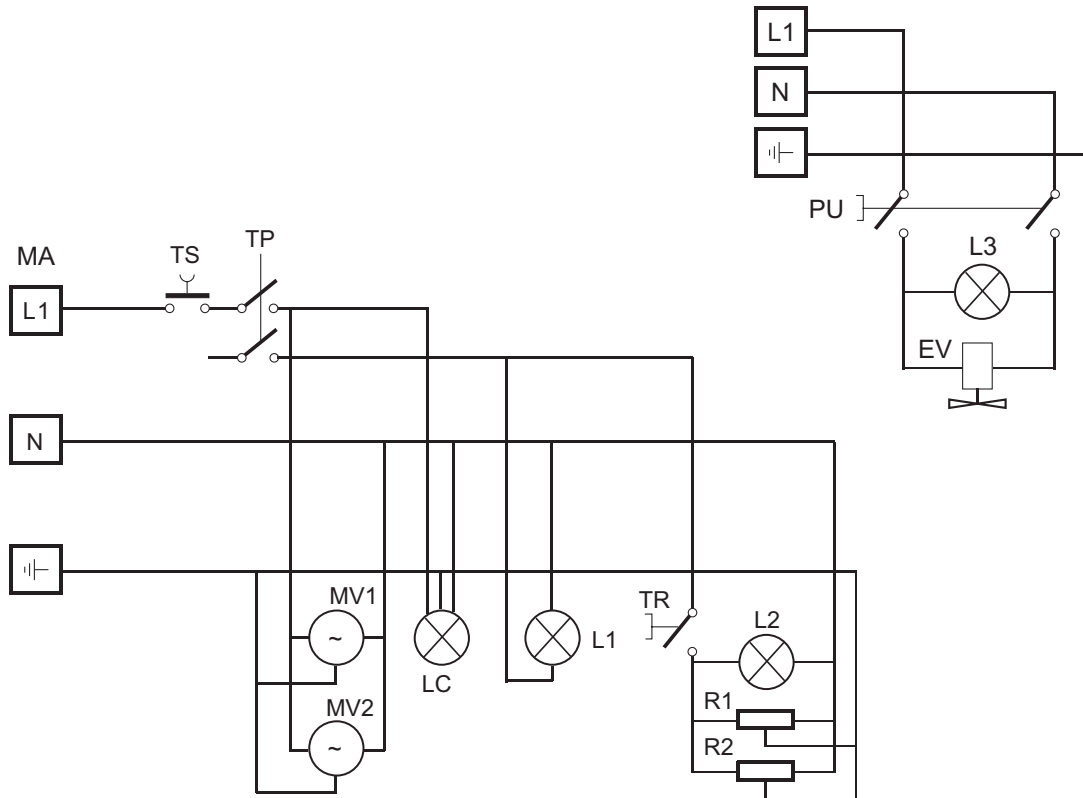


Schema elettrico • Wiring diagram • Schema électrique • Schaltplan • Esquema electrico

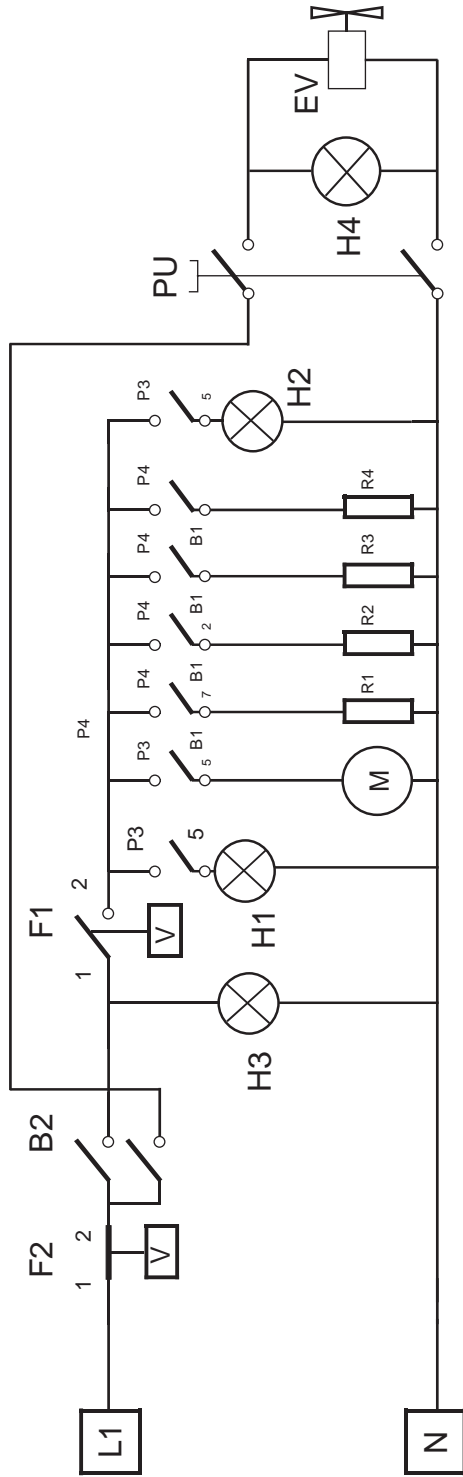


43 DX / 43 DX - UMI

**230V~
2,6 kW**

MA	Morsetteria	Line input terminal board	Boite à bornes	Anschlußklemme	Regleta de llegada de la línea
TS	Termostato di sicurezza	Safety thermostat	Thermostat de sûreté	Sicherheitsthermostat	Termostato de seguridad
TP	Timer programmatore	Timer	Temporisateur	Zeitregler	Temporizador
MV	Motore di ventilazione cella	Motorfan	Moteurventilateur	Motorventilator	Motorventilador
LC	Lampada cella di cottura	Cooking chamber light	Lampe cellule	Lampe	Lampara iluminacion camara
L1	Lampada spia arancio (programmatore)	Orange indicator (Timer)	Lampe orange (Temporisateur)	Orange Lampe (Zeitregler)	Indicador naranja (Temporizador)
L2	Lampada spia arancio (termostato cottura)	Orange indicator (Thermostat)	Lampe orange (Thermostat)	Orange Lampe (Thermostat)	Indicador naranja (Termostato)
L3	Led interno pulsante umidificatore	Indicator lamp humidifier bottom	Lampe pulsatoire humidificateur	Lampe Knopf für Beschwadung	Indicador pulsador umidificator
TR	Termostato di cottura	Thermostat	Thermostat	Thermostat	Termostato
R1	Resistenza circolare (1300 W - 230 V)	Circular element (1300 W - 230 V)	Résistance (1300 W - 230 V)	Widerstand (1300 W - 230 V)	Resistencia (1300 W - 230 V)
R2	Resistenza circolare (1300 W - 230 V)	Circular element (1300 W - 230 V)	Résistance (1300 W - 230 V)	Widerstand (1300 W - 230 V)	Resistencia (1300 W - 230 V)
EV	Elettrovalvola acqua	Solenoid valve	Electrovalve	Elektroventil	Electroválvula
PU	Pulsante di umidificazione	Humidifier push bottom	Pulsatoire humidificateur	Knopf für Beschwadung	Pulsador umidificator

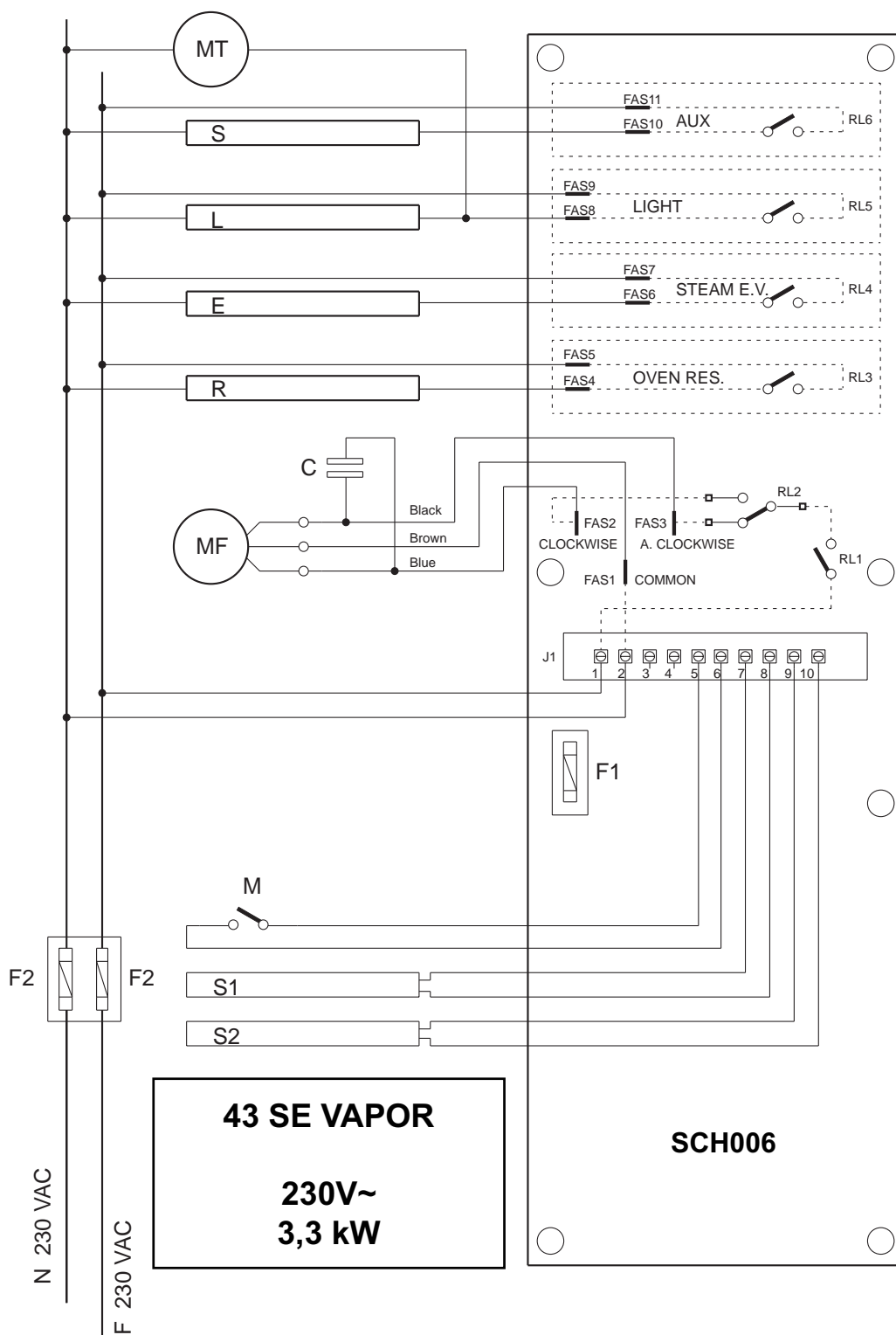
Schema elettrico • Wiring diagram • Schema électrique • Schaltplan • Esquema electrico



43 MX / 43 MX - UMI
230V~
3,2 kW

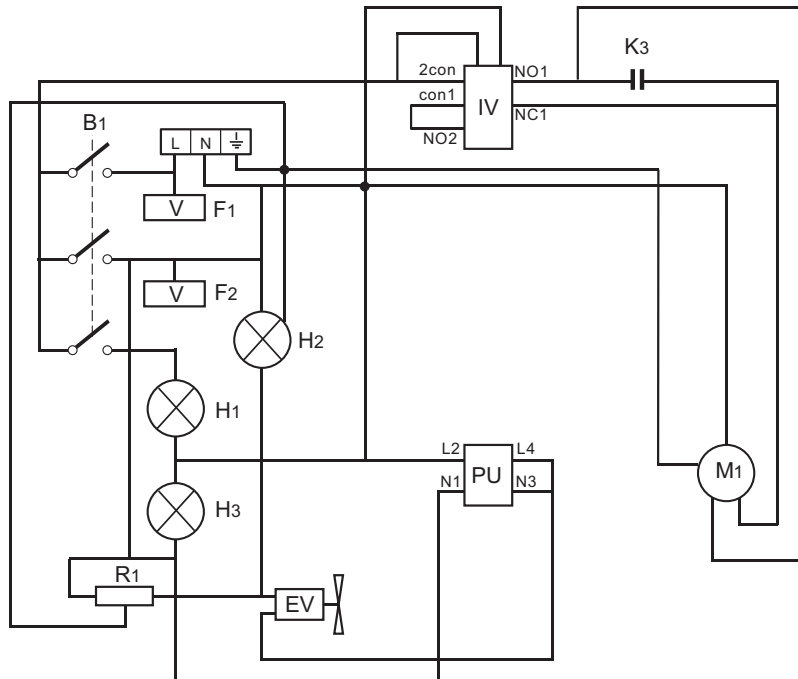
B1	Interruttore multifunzione	Multifunction switch	Commutateur	Multifunktion Schalter	Interruptor multifunción
B2	Temporizzatore	Timer	Temporisateur	Zeitregler	Temporizador
F1	Termostato di lavoro	Operation thermostat	Thermostat de travail	Thermostat Arbeit	Termostato de trabajo
F2	Termostato di sicurezza	Safety thermostat	Thermostat de sureté	Sicherheitsthermostat	Termostato de seguridad
H1	Lampada segnalazione verde	Green indicator light	Lampe verte	Grüne Signallampe	Indicador de funcionamiento verde
H2	Lampada illuminazione cella	Cooking chamber lamp	Lampe cellule	Lampe	Lampara illuminacion camara
H3	Lampada pia temporizzatore	Timer indicator lamp	Temporisateur lampe	Zeitregler Lampe	Indicador temporizador
H4	Led interno pulsante umidificatore	Indicator lamp humidifier bottom	Lampe pulsatoire humidificateur	Lampe Knopf für Beschwadung	Indicador pulsador umidificator
M	Motore	Motorfan	Moteur	Motorventilator	Motorventilator
R1	Resistenza circolare (2500 W - 230 V)	Circular element (2500 W - 230 V)	Résistance (2500 W - 230 V)	Widerstand (2500 W - 230 V)	Resistencia (2500 W - 230 V)
R2	Resistenza cielo (1700 W - 230 V)	Upper element (1700 W - 230 V)	Résistance (1700 W - 230 V)	Widerstand (1700 W - 230 V)	Resistencia (1700 W - 230 V)
R3	Resistenza suola (1300 W - 230 V)	Bottom element (1300 W - 230 V)	Résistance (1300 W - 230 V)	Widerstand (1300 W - 230 V)	Resistencia (1300 W - 230 V)
R4	Resistenza grill (700 W - 230 V)	Grill element (700 W - 230 V)	Résistance (700 W - 230 V)	Widerstand (700 W - 230 V)	Resistencia (700 W - 230 V)
EV	Elettrovalvola acqua	Solenoid valve	Electrovalve	Elektroventil	Electroválvula
PU	Pulsante di umidificazione	Humidifier push bottom	Pulsatoire humidificateur	Knopf für Beschwadung	Pulsador umidificator

Schema elettrico • Wiring diagram • Schema électrique • Schaltplan • Esquema electrico



SCH006	Scheda digitale	Digital board	Carte digitale	Digitalkarte	Tarjeta digital
S	Sblocco porta	Door release	Déblocage porte	Türentriegelung	Desbloqueo puerta
L	Lampada	Light	Lampe	Lampe	Lámpara
E	E.V. Acqua	Water E.V.	E.V. eau	Wasser E.V.	E.V. Agua
R	Resistenze	Heating elements	Resistances	Widerstände	Resistencias
MF	Motore	Motor	Motor	Motor	Motor
MT	Motore tangenziale				
C	Condensatore	Capacitor	Condensateur	Kondensator	Condensador
F1	Fusibile 63 mA	63 mA fuse	Fusible 63 mA	63 mA Schmelzsicherung	Fusible 63 mA
F2	Fusibile 20 A	20 A fuse	Fusible 20 A	20 A Schmelzsicherung	Fusible 20 A
M	Microinterruttore	Micro-switch	Micro-interrupteur	Mikroshalter	Microinterruptor
S1	Sonda forno	Oven probe	Sonde four	Ofensonde	Sonda horno
S2	Sonda prodotto	Product probe	Sonde produit	Produktsonde	Sonda producto
J1	Morsettiera	Terminal board	Boite de connexion	Klemmkasten	Caja de conexiones

Schema elettrico • Wiring diagram • Schema électrique • Schaltplan • Esquema electrico



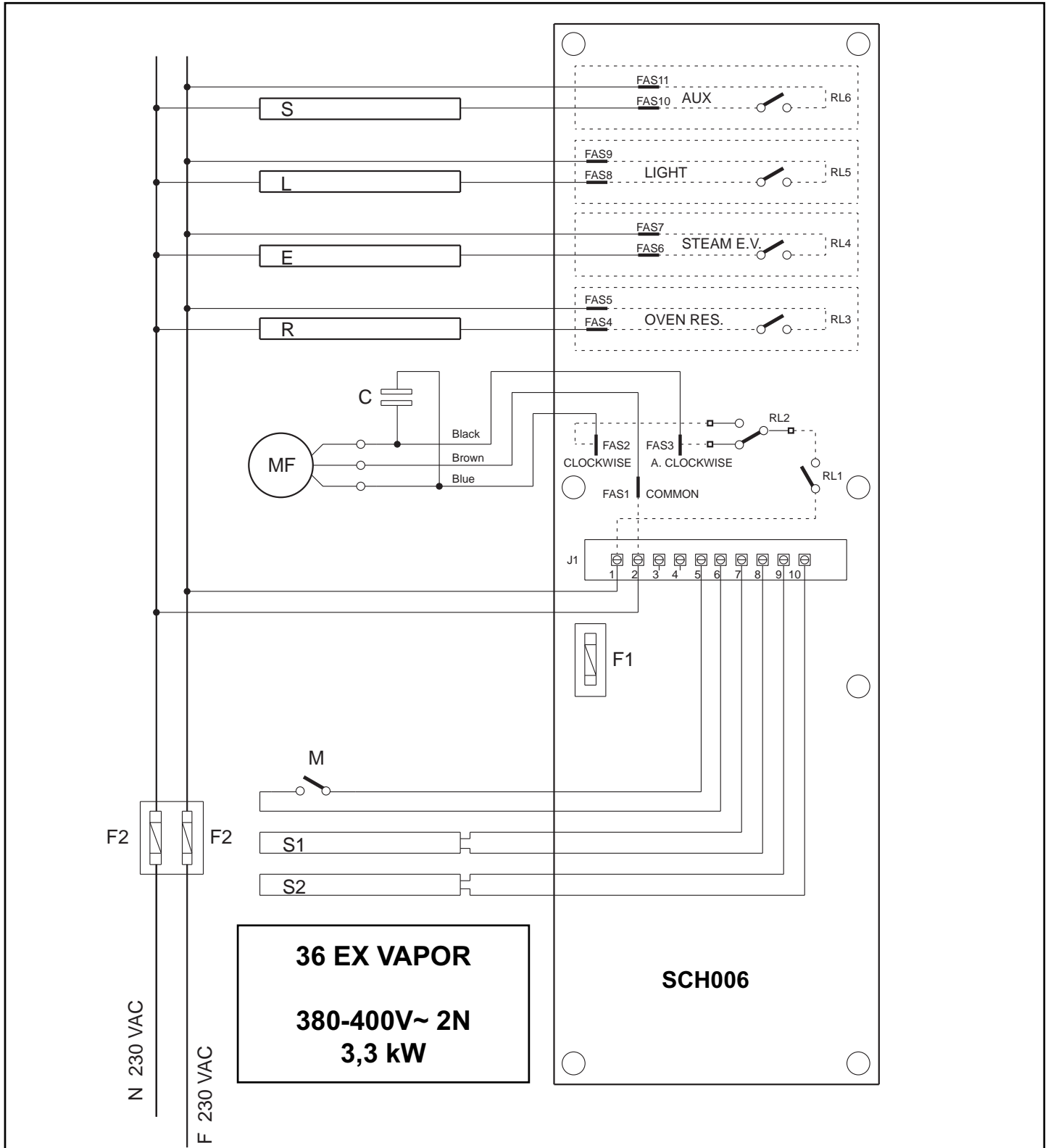
36 PX UMI /31 GX - UMI

230V~

3,3 kW

B1	Temporizzatore	Timer	Temporisateur	Zeitregler	Temporizador
F1	Termostato di sicurezza	Safety thermostat	Thermostat de sûreté	Sicherheitsthermostat	Termostato de seguridad
F2	Termostato di cottura	Thermostat	Thermostat	Thermostat	Termostato
H1	Lampada spia verde (Temporizzatore)	Green indicator (Timer)	Lampe verte (Temporisateur)	Grüne Lampe (Zeitregler)	Indicador verde (Temporizador)
H2	Lampada cella di cottura	Cooking chamber light	Lampe cellule	Lampe	Lampara iluminacion camara
H3	Lampada spia arancio (termostato cottura)	Orange indicator (Thermostat)	Lampe orange (Thermostat)	Orange Lampe (Thermostat)	Indicador naranja (Termostato)
M1	Motore di ventilazione cella	Motorfan	Moteurventilateur	Motorventilator	Motorventilador
R1	Resistenza circolare (3300 W - 230 V)	Circular element (3300 W - 230 V)	Résistance (3300 W - 230 V)	Widerstand (3300 W - 230 V)	Resistencia (3300 W - 230 V)
EV	Elettrovalvola acqua	Solenoid valve	Electrovalve	Elektroventil	Electroválvula
PU	Pulsante luminoso di umidificazione	Humidifier light button	Bouton-poussoir lumineux pour humidificateur	Leuchttaste für Beschwadung	Pulsador luminoso para umidificator

Schema elettrico • Wiring diagram • Schema électrique • Schaltplan • Esquema electrico

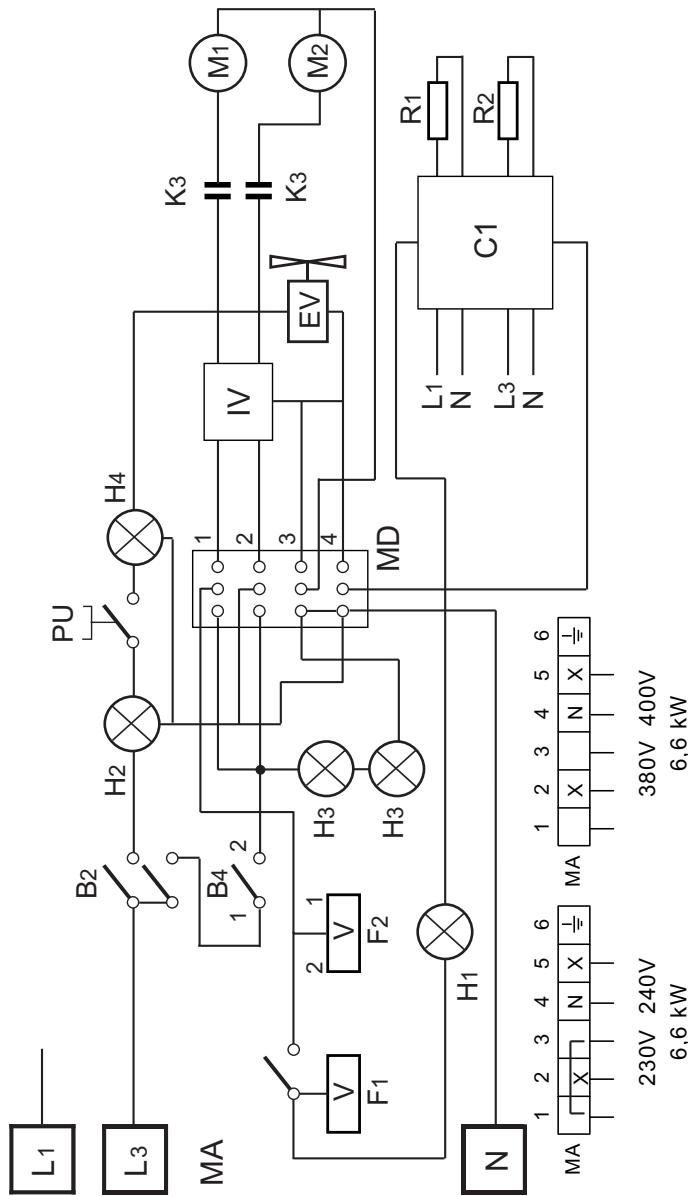


36 EX VAPOR
380-400V~ 2N
3,3 kW

SCH006

SCH006	Scheda digitale	Digital board	Carte digitale	Digitalkarte	Tarjeta digital
S	Sblocco porta	Door release	Déblocage porte	Türentriegelung	Desbloqueo puerta
L	Lampada	Light	Lampe	Lampe	Lámpara
E	E.V. Acqua	Water E.V.	E.V. eau	Wasser E.V.	E.V. Agua
R	Resistenze	Heating elements	Resistances	Widerstände	Resistencias
MF	Motore	Motor	Motor	Motor	Motor
C	Condensatore	Capacitor	Condensateur	Kondensator	Condensador
F1	Fusibile 63 mA	63 mA fuse	Fusible 63 mA	63 mA Schmelzsicherung	Fusible 63 mA
F2	Fusibile 20 A	20 A fuse	Fusible 20 A	20 A Schmelzsicherung	Fusible 20 A
M	Microinterruttore	Micro-switch	Micro-interrupteur	Mikroshalter	Microinterruptor
S1	Sonda forno	Oven probe	Sonde four	Ofensonde	Sonda horno
S2	Sonda prodotto	Product probe	Sonde produit	Produktsonde	Sonda producto
J1	Morsettiera	Terminal board	Boite de connexion	Klemmkasten	Caja de conexiones

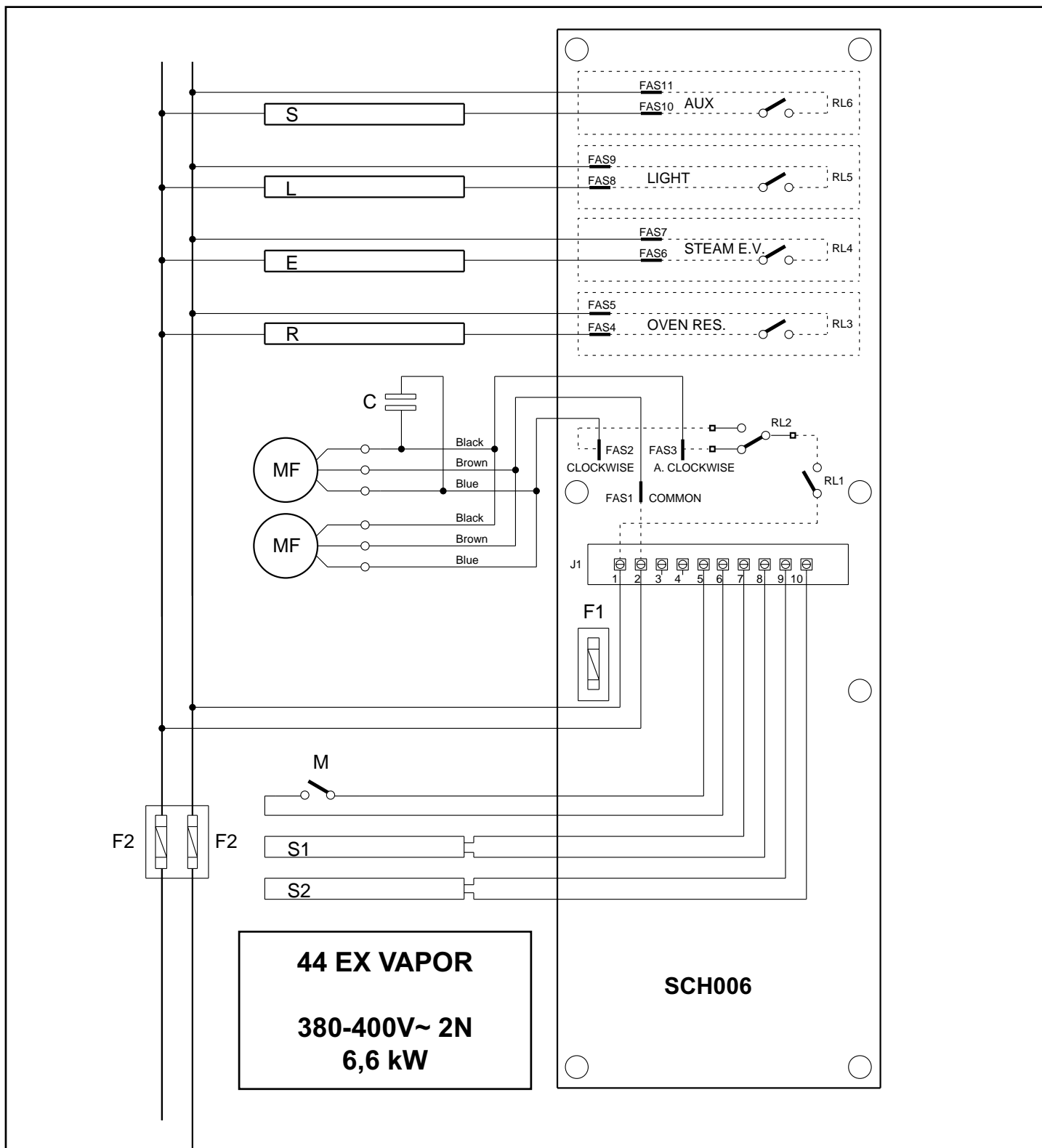
Schema elettrico • Wiring diagram • Schema électrique • Schaltplan • Esquema electrico



44 PX UMI /41 GX - UMI
380-400V~ 2N
6,6 kW

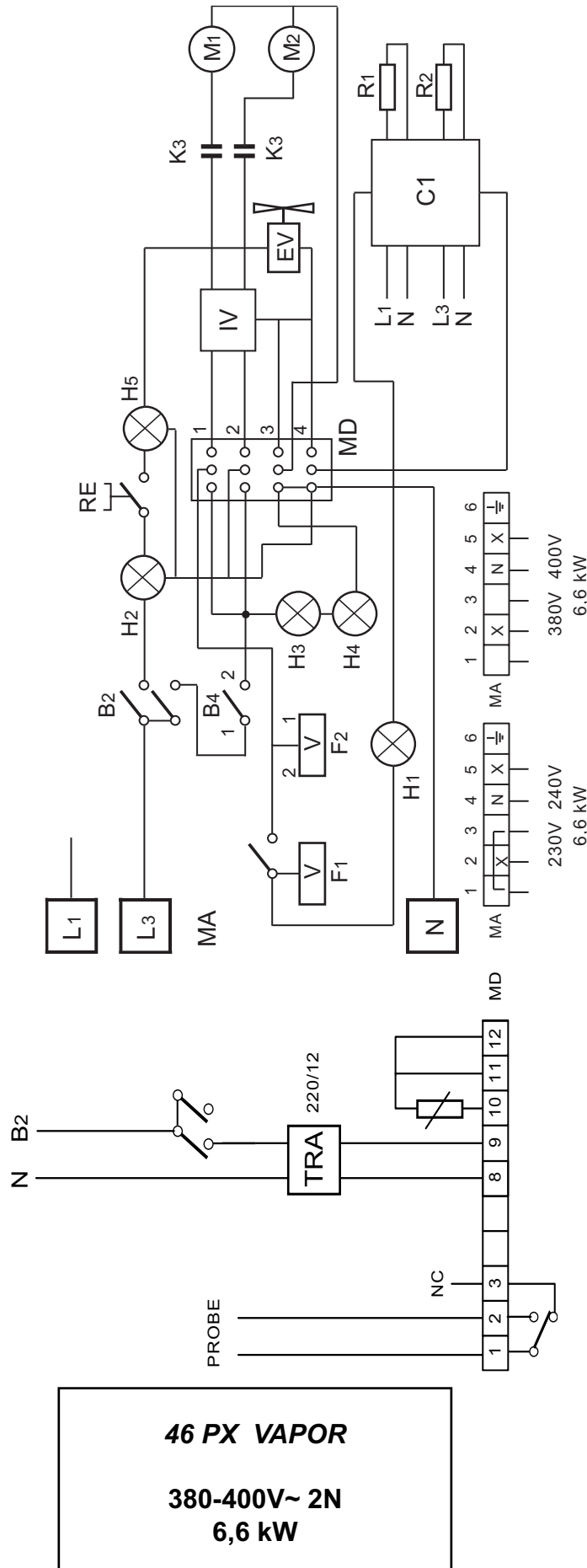
B2	Temporizzatore	Timer	Temporisateur	Zeitregler	Temporizador
B4	Microinterruttore porta	Door micro-switch	Minirupteur porte	Mikroschalter Tür	Microinterruptor puerta
MA	Morsettiera arrivo linea	Line input terminal board	Boîte à bornes	Anschlußklemme	Regleta de llegada de la línea
MD	Morsettiera di derivazione	Branch terminal board	Borne de dérivation	Abzweigungsklemmleiste	Bornera de derivación
F1	Termostato di cottura	Thermostat	Thermostat	Thermostat	Termostato
F2	Termostato di sicurezza	Safety thermostat	Thermostat de sûreté	Sicherheitsthermostat	Termostato de seguridad
PU	Pulsante di umidificazione	Humidifier push bottom	Pulsatoire humidificateur	Knopf für Beschwadung	Pulsador umidificator
M1,2	Motore di ventilazione cella	Motorfan	Moteurventilateur	Motorventilator	Motorventilador
C1	Teleruttore	Remote control switch	Télérupteur	Schutz	Telerruptor
IV	Invertitore di marcia	Reverse gear	Invert	Wechsel Richler	Envertidor
EV	Elettrovalvola	Solenoid valve	Electrovalve	Elektroventill	Electroválvula
K3	Condensatore	Capacitor	Condensateur	Kondensator	Condensador
H1	Lampada spia arancio (termostato cottura)	Orange indicator (Thermostat)	Lampe orange (Thermostat)	Orange Lampe (Thermostat)	Indicador naranja (Termostato)
H2	Lampada spia arancio (programmatore)	Orange indicator (Timer)	Lampe orange (Temporisateur)	Orange Lampe (Zeitregler)	Indicador naranja (Temporizador)
H3,4	Lampada cella di cottura	Cooking chamber light	Lampe cellule	Lampe	Lampara iluminación cámara
H5	Led interno pulsante umidificatore	Indicator lamp humidifier bottom	Lampe pulsatoire humidificateur	Lampe Knopf für Beschwadung	Indicador pulsador umidificator
TR	Termostato di cottura	Thermostat	Thermostat	Thermostat	Termostato
R1	Resistenza circolare (3300 W - 230 V)	Circular element (3300 W - 230 V)	Résistance (3300 W - 230 V)	Widerstand (3300 W - 230 V)	Resistencia (3300 W - 230 V)
R2	Resistenza circolare (3300 W - 230 V)	Circular element (3300 W - 230 V)	Résistance (3300 W - 230 V)	Widerstand (3300 W - 230 V)	Resistencia (3300 W - 230 V)

Schema elettrico • Wiring diagram • Schema électrique • Schaltplan • Esquema electrico



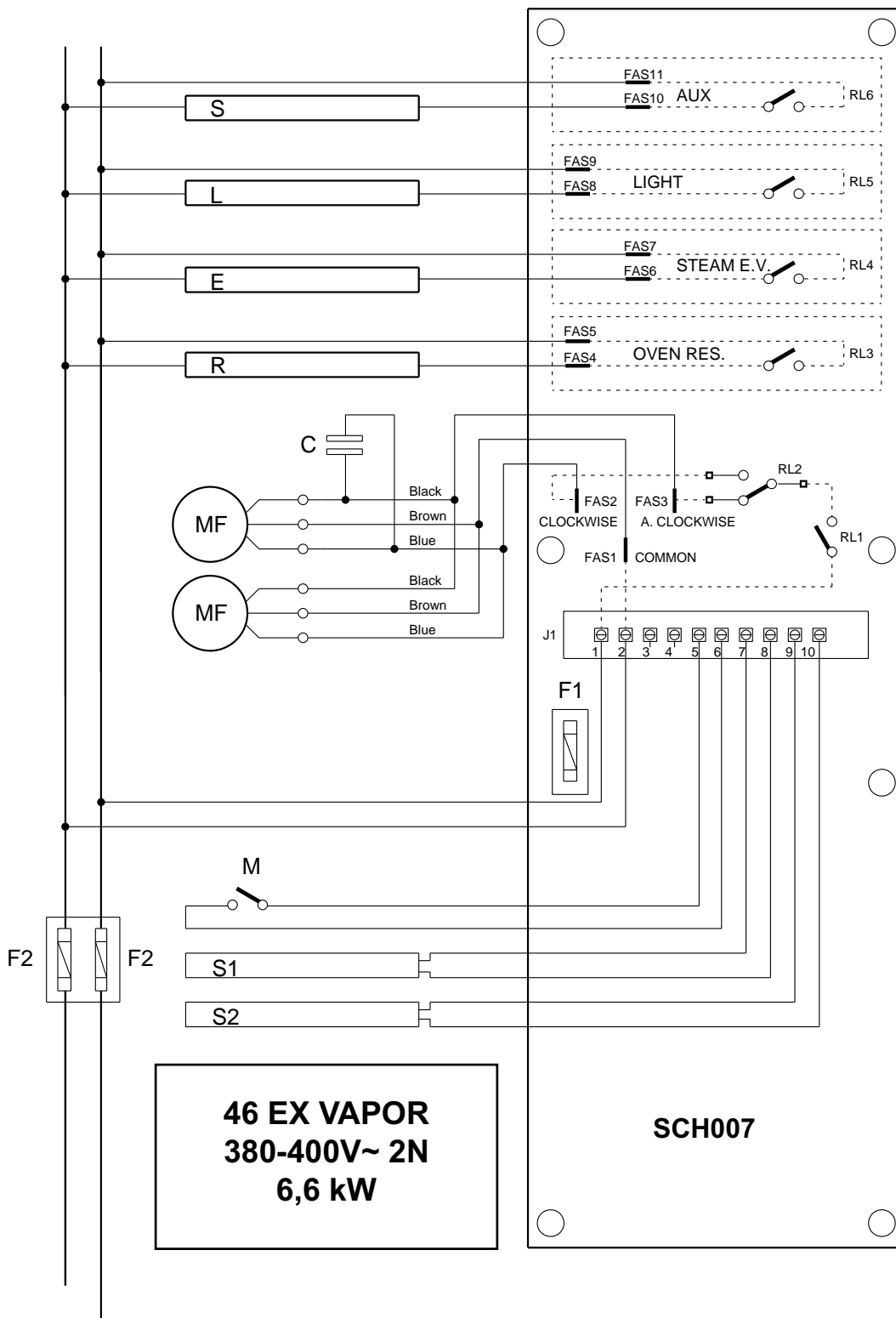
SCH006	Scheda digitale	Digital board	Carte digitale	Digitalkarte	Tarjeta digital
S	Sblocco porta	Door release	Débloccage porte	Türentriegelung	Desbloqueo puerta
L	Lampada	Light	Lampe	Lampe	Lámpara
E	E.V. Acqua	Water E.V.	E.V. eau	Wasser E.V.	E.V. Agua
R	Resistenze	Heating elements	Resistances	Widerstände	Resistencias
MF	Motore	Motor	Motor	Motor	Motor
C	Condensatore	Capacitor	Condensateur	Kondensator	Condensador
F1	Fusibile 63 mA	63 mA fuse	Fusible 63 mA	63 mA Schmelzsicherung	Fusible 63 mA
F2	Fusibile 20 A	20 A fuse	Fusible 20 A	20 A Schmelzsicherung	Fusible 20 A
M	Microinterruttore	Micro-switch	Micro-interrupteur	Mikroshalter	Microinterruptor
S1	Sonda forno	Oven probe	Sonde four	Ofensonde	Sonda horno
S2	Sonda prodotto	Product probe	Sonde produit	Produktsonde	Sonda producto
J1	Morsettiere	Terminal board	Boite de connexion	Klemmkasten	Caja de conexiones

Schema elettrico • Wiring diagram • Schema électrique • Schaltplan • Esquema electrico



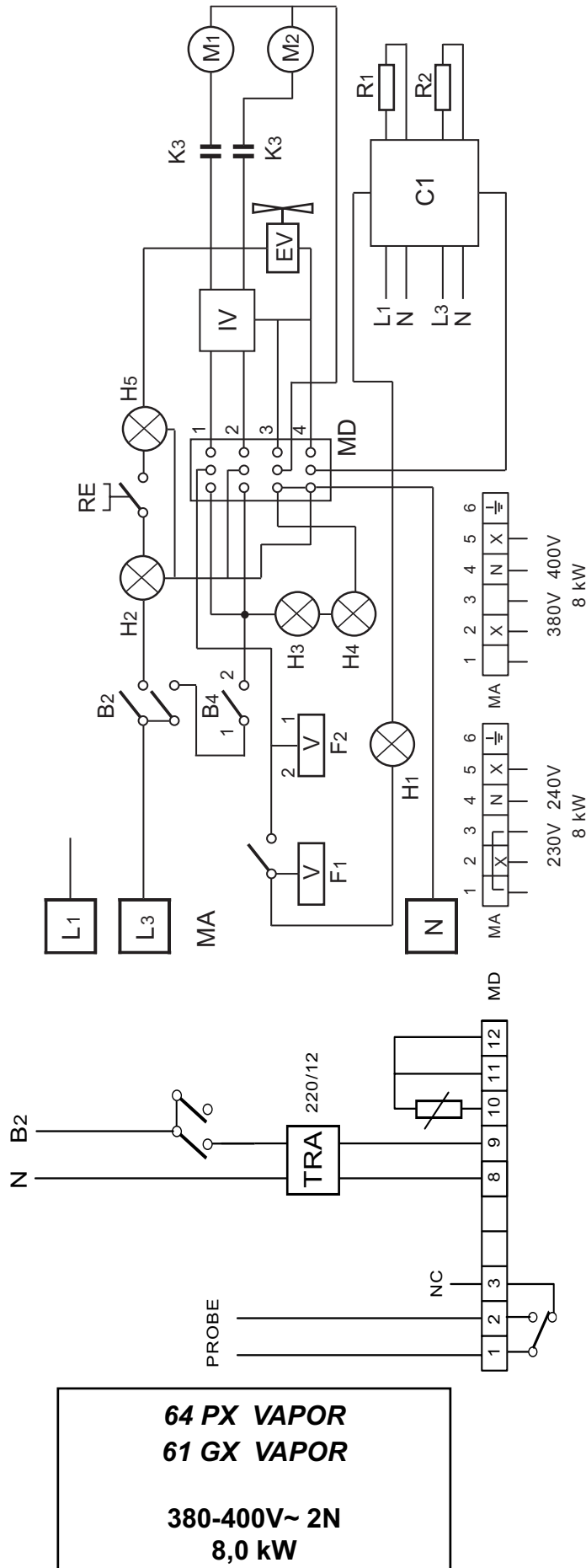
- | | | | | | |
|-------------|---|-----------------------------------|------------------------------|-----------------------------|----------------------------------|
| B2 | Temporizzatore | Timer | Temporisateur | Zeitregler | Temporizador |
| B4 | Microinterruttore porta | Door micro-switch | Minirupteur porte | Mikroschalter Tür | Microinterruptor puerta |
| MA | Morsattiera arrivo linea | Line input terminal board | Boîte à bornes | Anschlussklemme | Regleta de llegada de la linea |
| MD | Morsattiera di derivazione | Branch terminal board | Borne de dérivation | Abzweigungsklemmenleiste | Bornera de derivación |
| F1 | Termostato di cottura | Thermostat | Thermostat | Thermostat | Termostato |
| F2 | Termostato di sicurezza | Safety thermostat | Thermostat de sûreté | Sicherheits thermostat | Termostato de seguridad |
| RE | Regolatore energia | Energy Regulator | Régulateur d'énergie | Energieregler | Regulador de energia |
| M1,2 | Motore di ventilazione cella | Motorfan | Moteurventilateur | Motorventilator | Motorventilador |
| C1 | Teleruttore | Remote control switch | Télérupteur | Schutz | Telerruptor |
| IV | Invertitore di marcia | Reverse gear | Invert | Wechsel Richter | Envertidor |
| EV | Elettrovalvola | Solenoid valve | Solenoid valve | Elektroventil | Electroválvula |
| K3 | Condensatore | Capacitor | Condensateur | Kondensator | Condensador |
| H1 | Lampada spia arancio (termostato cottura) | Orange indicator (Thermostat) | Lampe orange (Thermostat) | Orange Lampe (Thermostat) | Indicador naranja (Termostato) |
| H2 | Lampada spia arancio (programmatore) | Orange indicator (Timer) | Lampe orange (Temporisateur) | Orange Lampe (Zeitregler) | Indicador naranja (Temporizador) |
| H3,4 | Lampada cella di cottura | Cooking chamber light | Lampe cellule | Lampe | Lampara iluminacion camara |
| H5 | Led umidificatore | Indicator humidifier | Lampe humidificateur | Lampe für Beschwädung | Indicador umidificator |
| TRA | Termostato di cottura | Thermostat | Thermostat | Thermostat | Termostato |
| TRA | Trasformatore | Transformer | Transformateur | Transformator | Transformador |
| R1 | Resistenza circolare (4000 W - 230 V) | Circular element (4000 W - 230 V) | Resistance (4000 W - 230 V) | Widerstand (4000 W - 230 V) | Resistencia (4000 W - 230 V) |
| R2 | Resistenza circolare (4000 W - 230 V) | Circular element (4000 W - 230 V) | Resistance (4000 W - 230 V) | Widerstand (4000 W - 230 V) | Resistencia (4000 W - 230 V) |

Schema elettrico • Wiring diagram • Schema électrique • Schaltplan • Esquema electrico



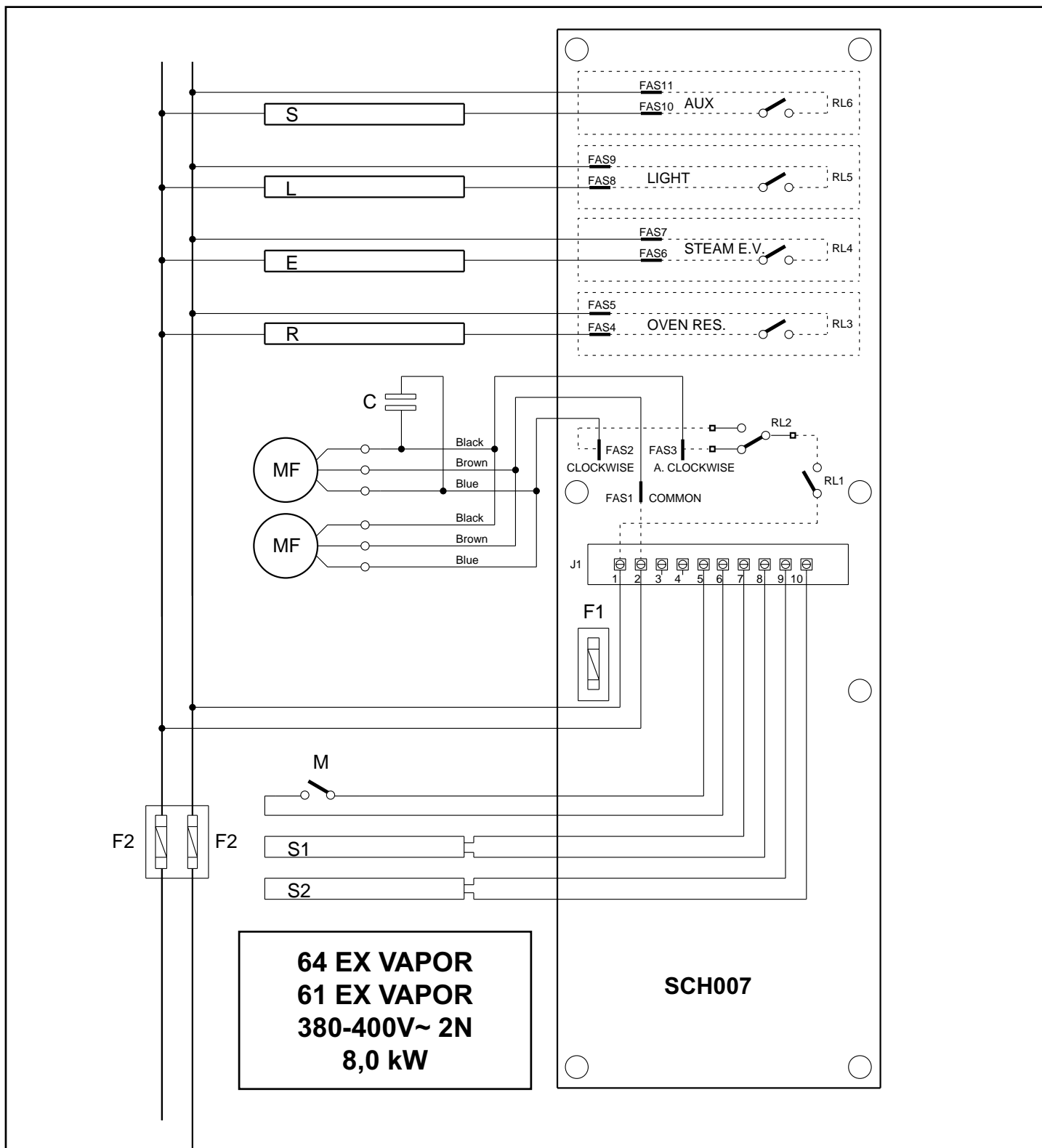
SCH007	Scheda digitale	Digital board	Carte digitale	Digitalkarte	Tarjeta digital
S	Sblocco porta	Door release	Déblocage porte	Türenriegelung	Desbloqueo puerta
L	Lampada	Light	Lampe	Lampe	Lámpara
E	E.V. Acqua	Water E.V.	E.V. eau	Wasser E.V.	E.V. Agua
R	Resistenze	Heating elements	Resistances	Widerstände	Resistencias
MF	Motore	Motor	Motor	Motor	Motor
C	Condensatore	Capacitor	Condensateur	Kondensator	Condensador
F1	Fusibile 63 mA	63 mA fuse	Fusible 63 mA	63 mA Schmelzsicherung	Fusible 63 mA
F2	Fusibile 20 A	20 A fuse	Fusible 20 A	20 A Schmelzsicherung	Fusible 20 A
M	Microinterruttore	Micro-switch	Micro-interrupteur	Mikroshalter	Microinterruptor
S1	Sonda forno	Oven probe	Sonde four	Ofensonde	Sonda horno
S2	Sonda prodotto	Product probe	Sonde produit	Produktsonde	Sonda producto
J1	Morsettiere	Terminal board	Boîte de connexion	Klemmkasten	Caja de conexiones

Schema elettrico • Wiring diagram • Schema électrique • Schaltplan • Esquema electrico



- | | | | | | |
|-------------|---|-----------------------------------|------------------------------|-----------------------------|----------------------------------|
| B2 | Temporizzatore | Timer | Temporisateur | Zeitregler | Temporizador |
| B4 | Microinterruttore porta | Door micro-switch | Minirupteur porte | Mikroschalter Tür | Microinterruptor puerta |
| MA | Morsettiera arrivo linea | Line input terminal board | Boîte à bornes | Anschlussklemme | Regleta de llegada de la línea |
| MD | Morsettiera di derivazione | Branch terminal board | Borne de dérivation | Abzweigungsklemmenleiste | Bornera de derivación |
| F1 | Termostato di cottura | Thermostat | Thermostat | Thermostat | Termostato |
| F2 | Termostato di sicurezza | Safety thermostat | Thermostat de sûreté | Sicherheits thermostat | Termostato de seguridad |
| RE | Regolatore energia | Energy Regulator | Régulateur d'énergie | Energie regler | Regulador de energía |
| M1,2 | Motore di ventilazione cella | Motorfan | Moteurventilateur | Motorventilator | Motorventilador |
| C1 | Teleruttore | Remote control switch | Télérupteur | Schutz | Telerruptor |
| EV | Invertitore di marcia | Reverse gear | Invert | Wechsel Richter | Envertidor |
| IV | Elettrovalvola | Solenoid valve | Electrovalve | Elektroventil | Electroválvula |
| K3 | Condensatore | Capacitor | Condensateur | Kondensator | Condensador |
| H1 | Lampada spia arancio (termostato cottura) | Orange indicator (Thermostat) | Lampe orange (Thermostat) | Orange Lampe (Thermostat) | Indicador naranja (Termostato) |
| H2 | Lampada spia arancio (programmatore) | Orange indicator (Timer) | Lampe orange (Temporisateur) | Orange Lampe (Zeitregler) | Indicador naranja (Temporizador) |
| H3,4 | Lampada cella di cottura | Cooking chamber light | Lampe cellule | Lampe | Lampara iluminación cámara |
| H5 | Led umidificatore | Indicator humidifier | Lampe humidificateur | Lampe für Beschwädung | Indicador umidificator |
| TRA | Termostato di cottura | Transformer | Thermostat | Transformator | Termostato |
| R1 | Resistenza circolare (4000 W - 230 V) | Circular element (4000 W - 230 V) | Resistance (4000 W - 230 V) | Widerstand (4000 W - 230 V) | Resistencia (4000 W - 230 V) |
| R2 | Resistenza circolare (4000 W - 230 V) | Circular element (4000 W - 230 V) | Resistance (4000 W - 230 V) | Widerstand (4000 W - 230 V) | Resistencia (4000 W - 230 V) |

Schema elettrico • Wiring diagram • Schema électrique • Schaltplan • Esquema electrico

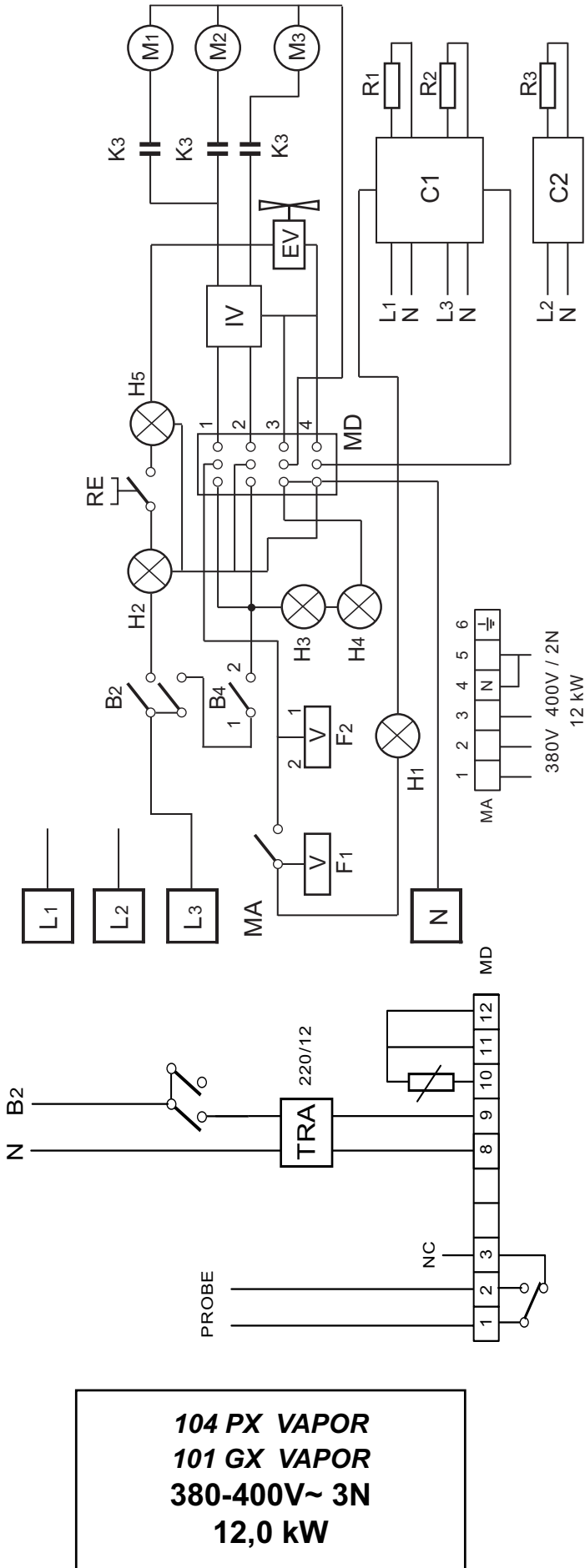


**64 EX VAPOR
61 EX VAPOR
380-400V~ 2N
8,0 kW**

SCH007

SCH007	Scheda digitale	Digital board	Carte digitale	Digitalkarte	Tarjeta digital
S	Sblocco porta	Door release	Débloccage porte	Türentriegelung	Desbloqueo puerta
L	Lampada	Light	Lampe	Lampe	Lámpara
E	E.V. Acqua	Water E.V.	E.V. eau	Wasser E.V.	E.V. Agua
R	Resistenze	Heating elements	Resistances	Widerstände	Resistencias
MF	Motore	Motor	Motor	Motor	Motor
C	Condensatore	Capacitor	Condensateur	Kondensator	Condensador
F1	Fusibile 63 mA	63 mA fuse	Fusible 63 mA	63 mA Schmelzsicherung	Fusible 63 mA
F2	Fusibile 20 A	20 A fuse	Fusible 20 A	20 A Schmelzsicherung	Fusible 20 A
M	Microinterruttore	Micro-switch	Micro-interrupteur	Mikroshalter	Microinterruptor
S1	Sonda forno	Oven probe	Sonde four	Ofensonde	Sonda horno
S2	Sonda prodotto	Product probe	Sonde produit	Produktsonde	Sonda producto
J1	Morsettiera	Terminal board	Boite de connexion	Klemmkasten	Caja de conexiones

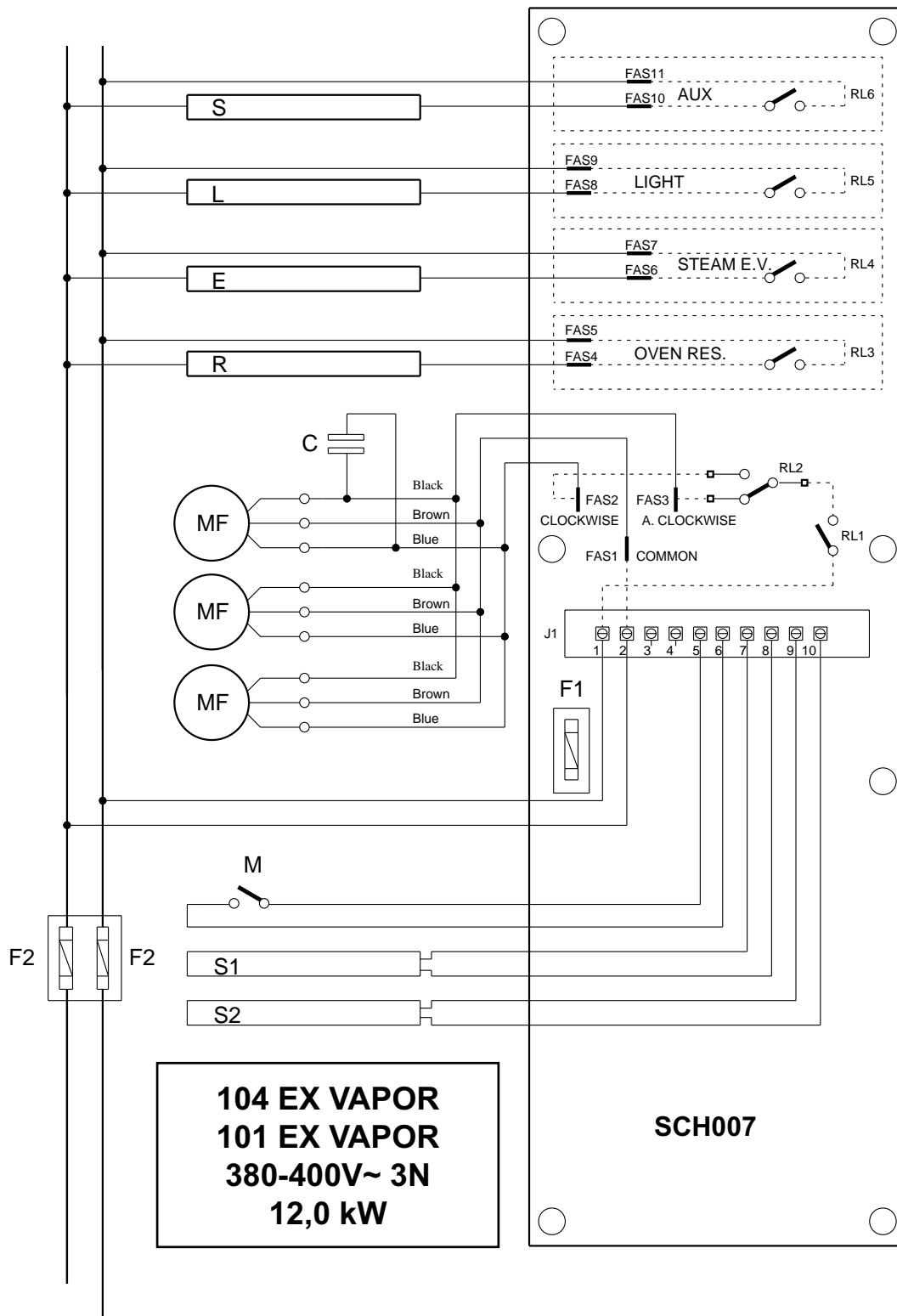
Schema elettrico • Wiring diagram • Schema électrique • Schaltplan • Esquema electrico



104 PX VAPOR
101 GX VAPOR
380-400V~ 3N
12,0 kW

- | | | | | | |
|-------------|---|-----------------------------------|------------------------------|-----------------------------|----------------------------------|
| B2 | Temporizzatore | Timer | Temporisateur | Zeitregler | Temporizador |
| B4 | Microinterruttore porta | Door micro-switch | Minisrupteur porte | Mikroschalter Tür | Microinterruptor puerta |
| MA | Morselliera arrivo linea | Line input terminal board | Boîte à bornes | Anschlusssklemme | Regleta de llegada de la línea |
| MD | Morselliera di derivazione | Branch terminal board | Borne de dérivation | Abzweigungsklemmenleiste | Bornera de derivación |
| F1 | Termostato di cottura | Thermostat | Thermostat | Thermostat | Termostato |
| F2 | Termostato di sicurezza | Safety thermostat | Thermostat de sûreté | Sicherheits thermostat | Termostato de seguridad |
| RE | Regolatore energia | Energy Regulator | Régulateur d'énergie | Energie regler | Regulador de energía |
| M1,2 | Motore di ventilazione cella | Motorfan | Moteur ventilateur | Motorventilator | Motorventilador |
| C1,2 | Teleruttore | Remote control switch | Télérupteur | Schutz | Telerruptor |
| IV | Invertitore di marcia | Reverse gear | Invert | Wechsel Richter | Envertidor |
| EV | Elettrovalvola | Solenoid valve | Electrovalve | Elektroventil | Electroválvula |
| K3 | Condensatore | Capacitor | Condensateur | Kondensator | Condensador |
| H1 | Lampada spia arancio (termostato cottura) | Orange indicator (Thermostat) | Lampe orange (Thermostat) | Orange Lampe (Thermostat) | Indicador naranja (Termostato) |
| H2 | Lampada spia arancio (programmatore) | Orange indicator (Timer) | Lampe orange (Temporisateur) | Orange Lampe (Zeitregler) | Indicador naranja (Temporizador) |
| H3,4 | Lampada cella di cottura | Cooking chamber light | Lampe cellule | Lampe | Lampara iluminación cámara |
| H5 | Led umidificatore | Indicator humidifier | Lampe humidificateur | Lampe für Beschwungung | Indicador umidificador |
| TR | Termostato di cottura | Thermostat | Thermostat | Thermostat | Termostato |
| TRA | Trasformatore | Transformer | Transformateur | Transformator | Transformador |
| R1 | Resistenza circolare (4000 W - 230 V) | Circular element (4000 W - 230 V) | Résistance (4000 W - 230 V) | Widerstand (4000 W - 230 V) | Resistencia (4000 W - 230 V) |
| R2 | Resistenza circolare (4000 W - 230 V) | Circular element (4000 W - 230 V) | Résistance (4000 W - 230 V) | Widerstand (4000 W - 230 V) | Resistencia (4000 W - 230 V) |
| R3 | Resistenza circolare (4000 W - 230 V) | Circular element (4000 W - 230 V) | Résistance (4000 W - 230 V) | Widerstand (4000 W - 230 V) | Resistencia (4000 W - 230 V) |

Schema elettrico • Wiring diagram • Schema électrique • Schaltplan • Esquema electrico

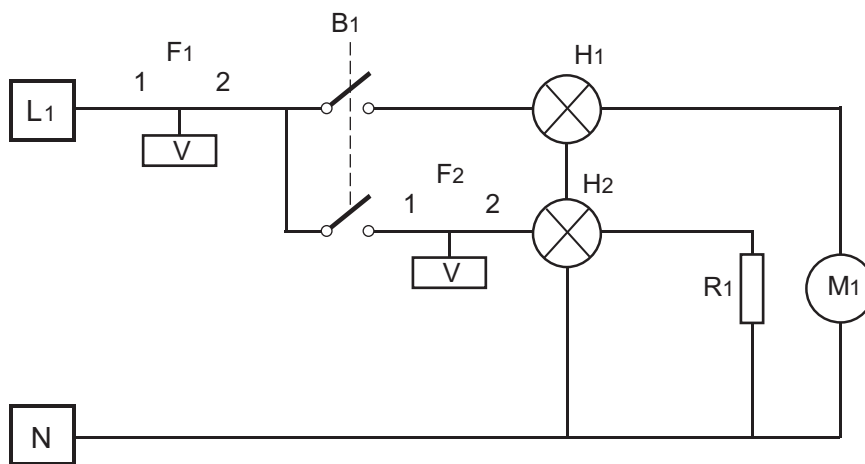


**104 EX VAPOR
101 EX VAPOR
380-400V~ 3N
12,0 kW**

SCH007

SCH007	Scheda digitale	Digital board	Carte digitale	Digitalkarte	Tarjeta digital
S	Sblocco porta	Door release	Débloccage porte	Türentriegelung	Desbloqueo puerta
L	Lampada	Light	Lampe	Lampe	Lámpara
E	E.V. Acqua	Water E.V.	E.V. eau	Wasser E.V.	E.V. Agua
R	Resistenze	Heating elements	Resistances	Widerstände	Resistencias
MF	Motore	Motor	Motor	Motor	Motor
C	Condensatore	Capacitor	Condensateur	Kondensator	Condensador
F1	Fusibile 63 mA	63 mA fuse	Fusible 63 mA	63 mA Schmelzsicherung	Fusible 63 mA
F2	Fusibile 20 A	20 A fuse	Fusible 20 A	20 A Schmelzsicherung	Fusible 20 A
M	Microinterruttore	Micro-switch	Micro-interrupteur	Mikroshalter	Microinterruptor
S1	Sonda forno	Oven probe	Sonde four	Ofensonde	Sonda horno
S2	Sonda prodotto	Product probe	Sonde produit	Produktsonde	Sonda producto
J1	Morsettiera	Terminal board	Boite de connexion	Klemmkasten	Caja de conexiones

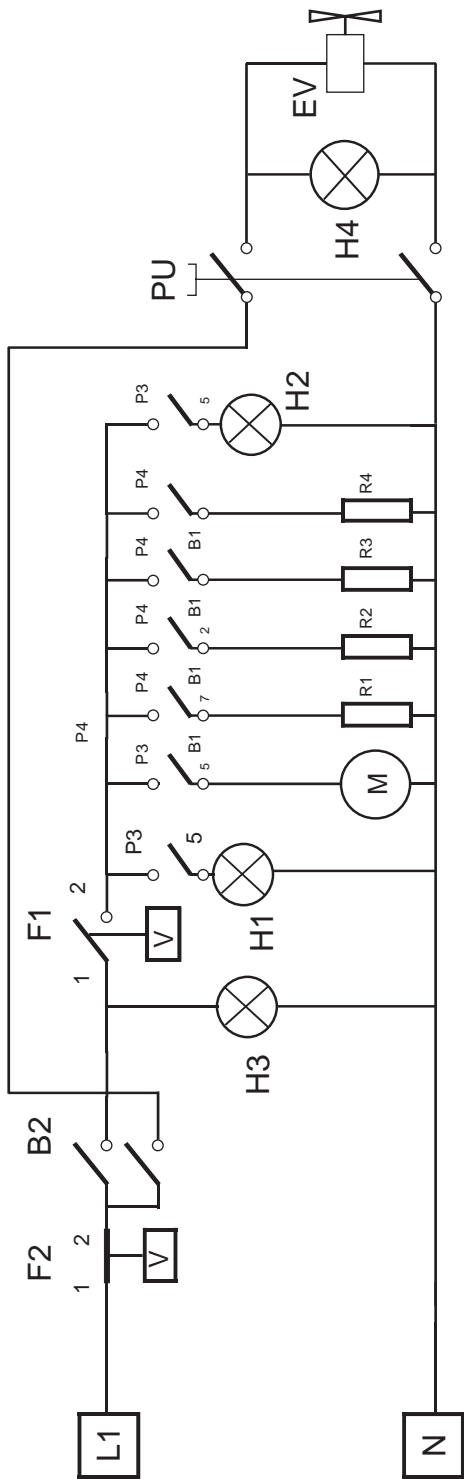
Schema elettrico • Wiring diagram • Schema électrique • Schaltplan • Esquema electrico



12 GX
230V~
2,5 kW

B1	Temporizzatore	Timer	Temporisateur	Zeitregler	Temporizador
F1	Termostato di sicurezza	Safety thermostat	Thermostat de sureté	Sicherheitsthermostat	Termostato de seguridad
F2	Termostato di cottura	Thermostat	Thermostat	Thermostat	Termostato
H1	Lampada spia verde (Temporizzatore)	Green indicator light (Timer)	Lampe verte (Temporisateur)	Grüne Lampe (Zeitregler)	Indicador verde (Temporizador)
H2	Lampada spia arancio (termostato cottura)	Orange indicator light (Thermostat)	Lampe orange (Thermostat)	Orange Lampe (Thermostat)	Indicador naranja (Termostato)
M1	Motore di ventilazione cella	Motorfan	Moteurventilateur	Motorventilator	Motorventilador
R1	Resistenza circolare (2500 W - 230 V)	Circular element (2500 W - 230 V)	Résistance (2500 W - 230 V)	Widerstand (2500 W - 230 V)	Resistencia (2500 W - 230 V)

Schema elettrico • Wiring diagram • Schema électrique • Schaltplan • Esquema electrico

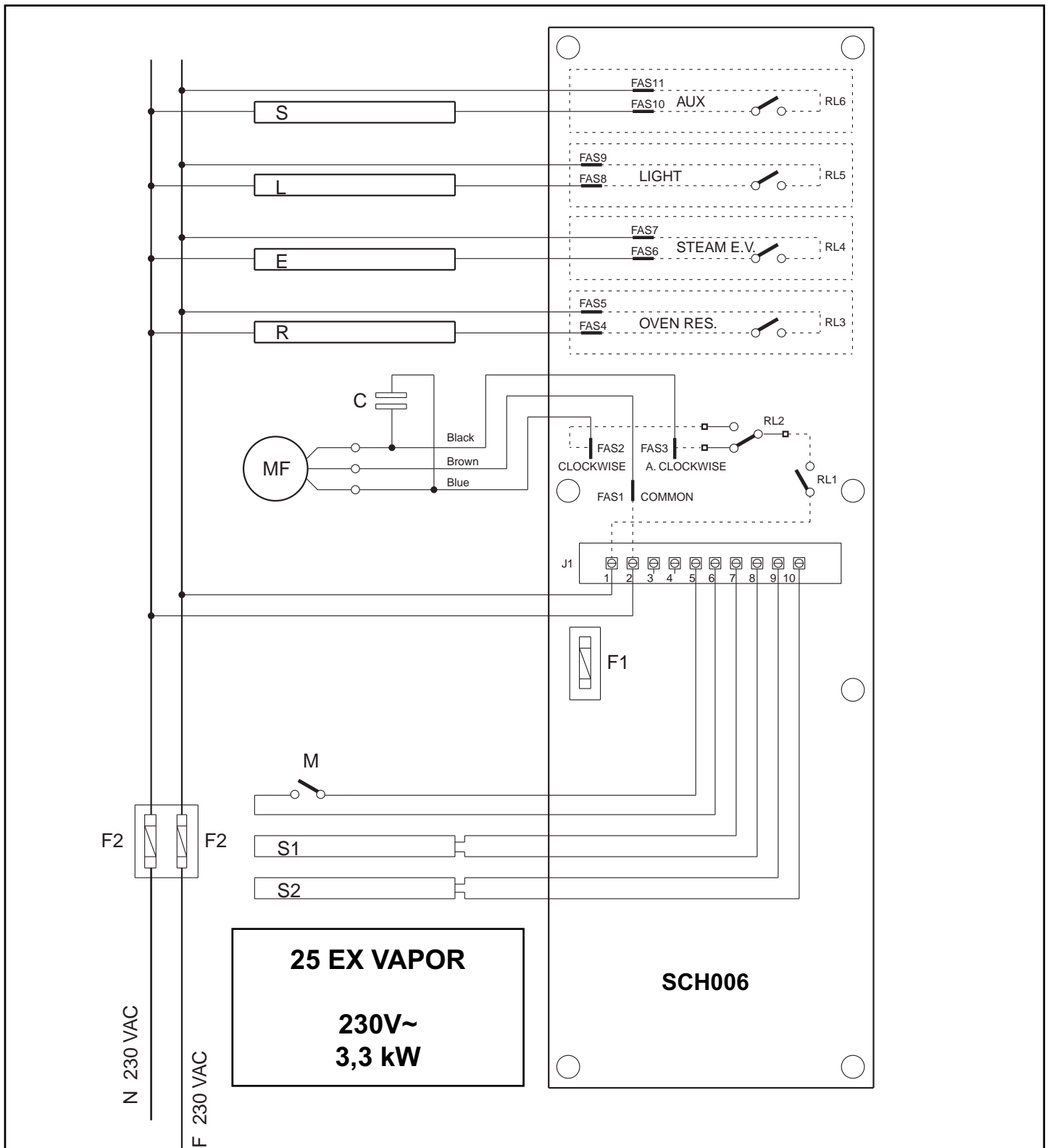


23 MX / 23 MX UMI

230V~
3,2 kW

B1	Interruttore multifunzione	Commutateur	Multifunction switch	Interruptor multifunción
B2	Temporizzatore	Temporisateur	Timer	Temporizador
F1	Termostato di lavoro	Thermostat de travail	Operation thermostat	Termostato de trabajo
F2	Termostato di sicurezza	Thermostat de sureté	Safety thermostat	Termostato de seguridad
H1	Lampada segnalazione verde	Lampe verte	Green indicator light	Indicador de funcionamiento verde
H2	Lampada illuminazione cella	Lampe cellule	Cooking chamber lamp	Lampara iluminacion camara
H3	Lampada pia temporizzatore	Temporisateur lampe	Timer indicator lamp	Indicador temporizador
H4	Led interno pulsante umidificatore	Lampe pulsatoire humidificateur	Indicator lamp humidifier bottom	Indicador pulsador umidificator
M	Motore	Moteur	Motorfan	Motorventilador
R1	Resistenza circolare (2500 W - 230 V)	Résistance (2500 W - 230 V)	Circular element (2500 W - 230 V)	Resistencia (2500 W - 230 V)
R2	Resistenza cielo (1700 W - 230 V)	Résistance (1700 W - 230 V)	Upper element (1700 W - 230 V)	Resistencia (1700 W - 230 V)
R3	Resistenza suola (1500 W - 230 V)	Résistance (1500 W - 230 V)	Bottom element (1500 W - 230 V)	Resistencia (1500 W - 230 V)
R4	Resistenza grill (700 W - 230 V)	Résistance (700 W - 230 V)	Grill element (700 W - 230 V)	Resistencia (700 W - 230 V)
EV	Elettrovalvola acqua	Electrovalve	Solenoid valve	Electroválvula
PU	Pulsante di umidificazione	Pulsatoire humidificateur	Humidifier push bottom	Pulsador umidificator

Schema elettrico • Wiring diagram • Schema électrique • Schaltplan • Esquema electrico



25 EX VAPOR
230V~
3,3 kW

SCH006

SCH006	Scheda digitale	Digital board	Carte digitale	Digitalkarte	Tarjeta digital
S	Sblocco porta	Door release	Déblocage porte	Türentriegelung	Desbloqueo puerta
L	Lampada	Light	Lampe	Lampe	Lámpara
E	E.V. Acqua	Water E.V.	E.V. eau	Wasser E.V.	E.V. Agua
R	Resistenze	Heating elements	Resistances	Widerstande	Resistencias
MF	Motore	Motor	Motor	Motor	Motor
C	Condensatore	Capacitor	Condensateur	Kondensator	Condensador
F1	Fusibile 63 mA	63 mA fuse	Fusible 63 mA	63 mA Schmelzsicherung	Fusible 63 mA
F2	Fusibile 20 A	20 A fuse	Fusible 20 A	20 A Schmelzsicherung	Fusible 20 A
M	Microinterruttore	Micro-switch	Micro-interrupteur	Mikroshalter	Microinterruptor
S1	Sonda forno	Oven probe	Sonde four	Ofensonde	Sonda horno
S2	Sonda prodotto	Product probe	Sonde produit	Produktsonde	Sonda producto
J1	Morsettiere	Terminal board	Boite de connexion	Klemmkasten	Caja de conexiones