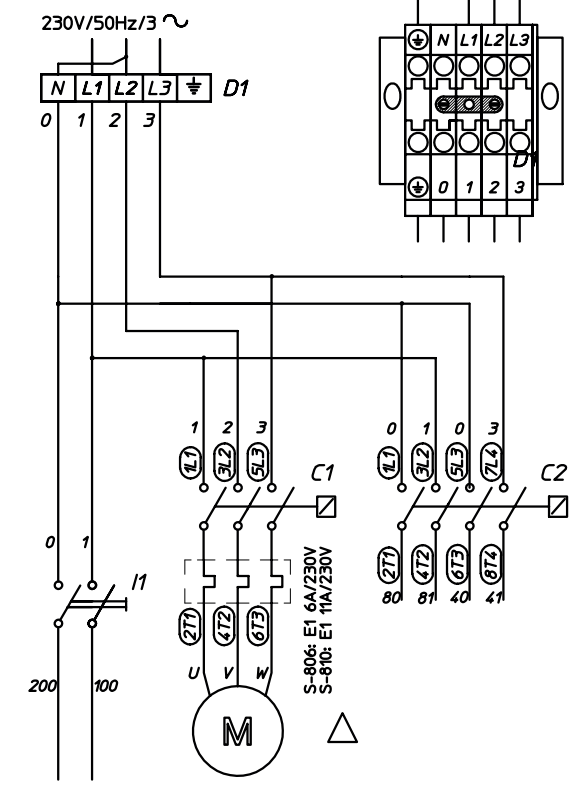
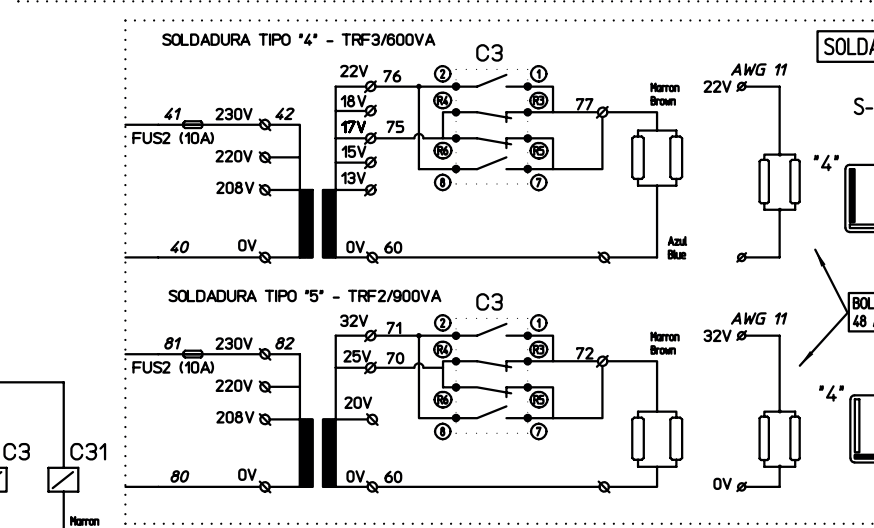
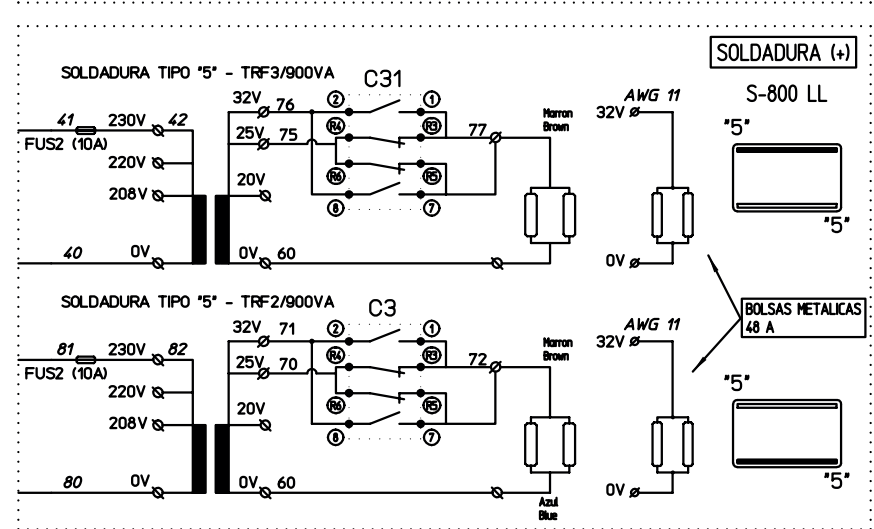
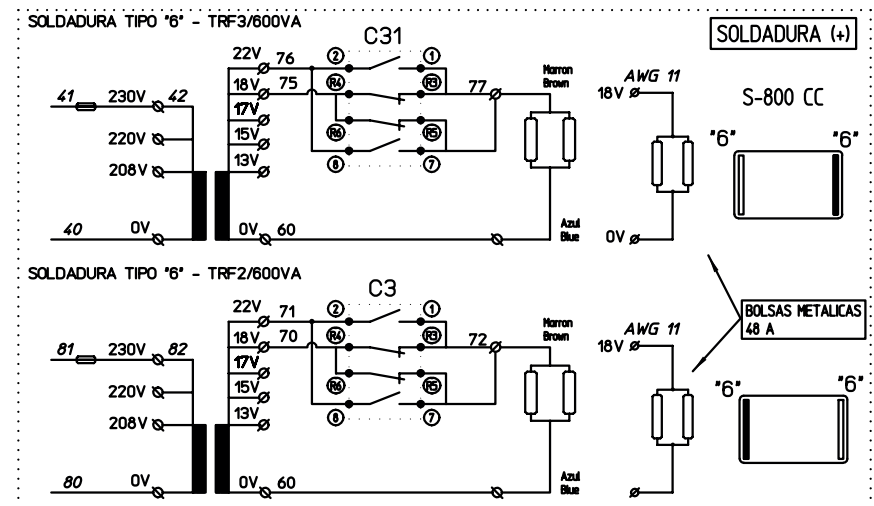
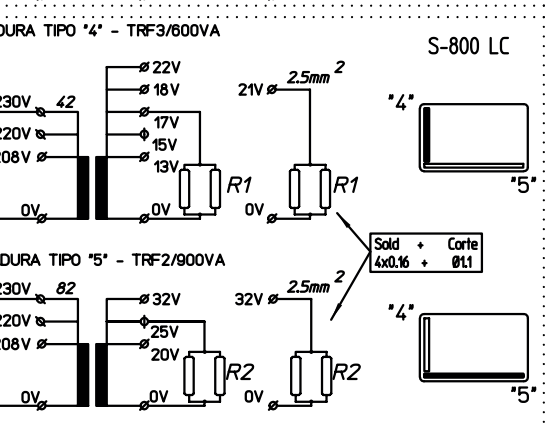
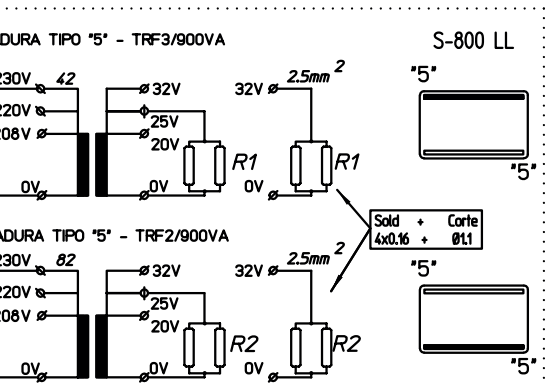
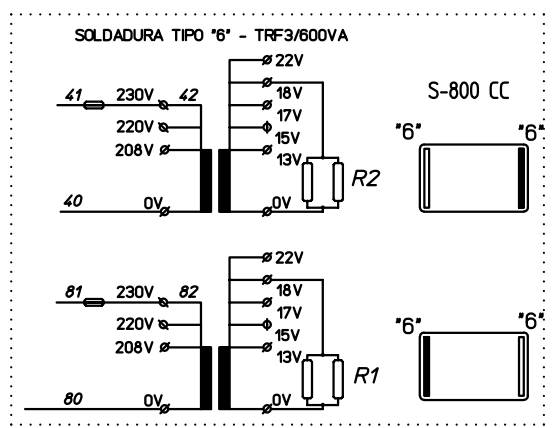
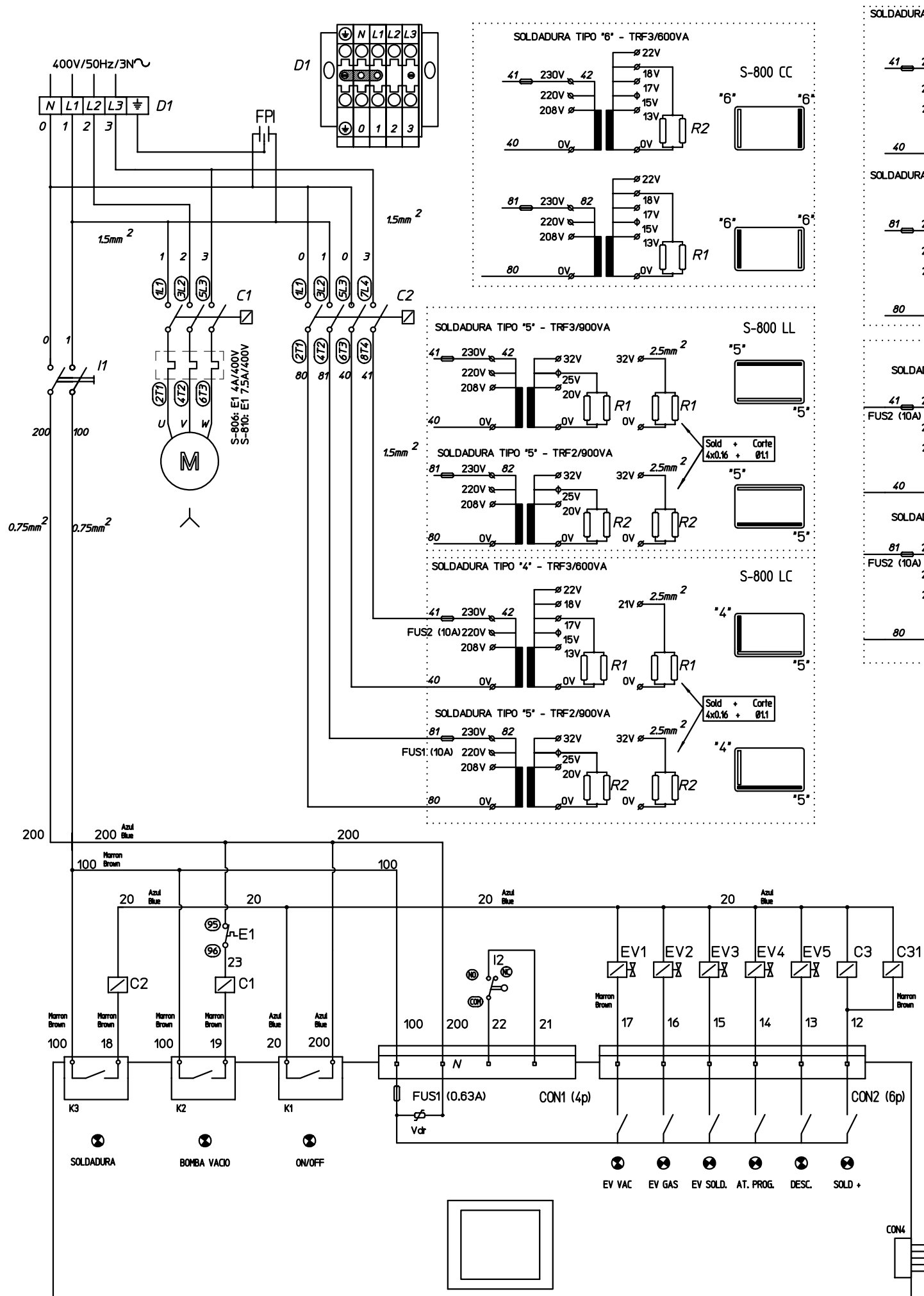


	Denominación	Description	Denomination
C1	CONTACTOR BOMBA VACIO	VACUUM PUMP CONTACTOR	CONTACTEUR POMPE À VIDE
C2	CONTACTOR TRANSFORMADOR SOLDADURA	SEAL TRANSFORMER CONTACTOR	CONTACTEUR TRANSFORMATEUR DE SOUDURE
C3	CONTACTOR SOLDADURA PLUS	PLUS SEAL CONTACTOR	CONTACTEUR SOUDURE PLUS
C31	CONTACTOR SOLDADURA PLUS	PLUS SEAL CONTACTOR	CONTACTEUR SOUDURE PLUS
D1	REGLETA CONEXION	CONNECTION BLOCK	BLOC DE CONNEXION
EV1	ELECTROVALVULA VACIO	VACUUM ELECTROVALVE	ELECTROVANNE DE VIDE
EV2	ELECTROVALVULA GAS	GAS ELECTROVALVE	ÉLECTROVALVE GAZ
EV3	ELECTROVALVULA SOLDADURA	SEAL ELECTROVALVE	ÉLECTROVALVE SOUDURE
EV4	ELECTROVALVULA ATMOSFERA PROGRESIVA	SOFT AIR ELECTROVALVE	ELECTROVALVE D'ATM. PROGRESSIVE
EV5	ELECTROVALVULA DESCOMPRESION	DECOMPRESSION ELECTROVALVE	ÉLECTROVANNE DE DÉCOMPRESSION
E1	RELE TERMICO	MOTOR RELAY	RALAIS MOTEUR
FPI	FILTRO PROTECCION DE INTERFERENCIAS	INTERFERENCES PROTECTION FILTER	FILTRE DE PROTECCION INTERFÉRENCES
FUS1	FUSIBLE	FUSE	FUSIBLE
FUS2	FUSIBLE	FUSE	FUSIBLE
I1	INTERRUPTOR GENERAL LUMINOSO	MAIN SWITCH	INTERRUPTEUR GÉNÉRAL
I2	MICRO TAPA	BOARD MICROSWITCH	MICRORRUPTEUR CHOCHÉ
K0	RELE CONEXION RED	CONNECTION RELAY	RELAIS DE CONNEXION
K1	RELE BOMBA VACIO	VACUUM PUMP RELAY	RELAIS POMPE À VIDE
K2	RELE TRANSF. SOLDADURA	SEAL TRANSFORMER RELAY	RELAIS TRANSFORMATEUR DE SOUDURE
M	MOTOR	MOTOR	MOTEUR
PC	PLACA DE CONTROL	CONTROL CARD	CARTE COMMANDE
R1	RESISTENCIA SOLDADURA	SEAL ELEMENT	RÉSISTANCE DE SOUDURE
R2	RESISTENCIA SOLDADURA	SEAL ELEMENT	RÉSISTANCE DE SOUDURE
TCL	TECLADO	KEYBOARD	CLAVIER
TRF1	TRANSFORMADOR DE MANIOBRA	OPERATION TRANSFORMER	TRANSFORMATOUR DE COMMANDE
TRF2	TRANSFORMADOR SOLDADURA	SEAL TRANSFORMER	TRANSFORMATEUR DE SOUDURE
TRF3	TRANSFORMADOR SOLDADURA+	SEAL TRANSFORMER+	TRANSFORMATEUR DE SOUDURE+
VDR	VARISTOR	VARISTOR	VARISTOR



CAMBIO DE TENSION 400V/230V
 1-Desconectar el neutro de la regleta de conexiones y conectar el puente suministrado.
 2-Realizar las conexiones del motor segun se indica en la caja de bornes.
 3-Ajustar el rele termico.

MODELOS:
 SU-806. MOTOR: 1.5 kW
 SU-810. MOTOR: 2.2 kW

